



2023 PAVING PROJECT - RECONDITION

PUBLIC INFORMATIONAL MEETING

FEBRUARY 15, 2023



Introduction and Meeting Format

- Introduce Project Team
 - Ben Krumenauer, Administrator
 - Teal Spellman, P.E., Director of Public Works
 - Thad Majkowski, P.E., Project Manager
 - Matt Dorow, E.I.T., Project Engineer
- Meeting Format
 - Presentation per Agenda (about 15–20 minutes)
 - Questions and Answers with Project Team

Project Overview

- Road – Ord 49-11 Definitions

Recondition-Pavement reconditioning is a rehabilitation process that pulverizes old bituminous pavement and mixes it with the underlying aggregate, which adds additional stability to the existing subgrade and aggregate base. After reclamation and grading, two lifts of bituminous pavement will be placed. The reclamation process may include spot repairs of existing concrete curb and gutter.

- Driveway and Curb & Gutter Patching

- Storm Sewer Repairs

Catch Basin/Manhole Rings

- Sanitary Sewer

Manhole Rings

Road & Curb Construction

- All curb and gutter will be replaced based on need to repair failed areas.
- All Areas will have the asphalt removed, proof roll base course, patch as required, add base course and pave a new asphalt surface.



Sanitary Sewer – Manholes Rings

- Replace the Adjustment Rings

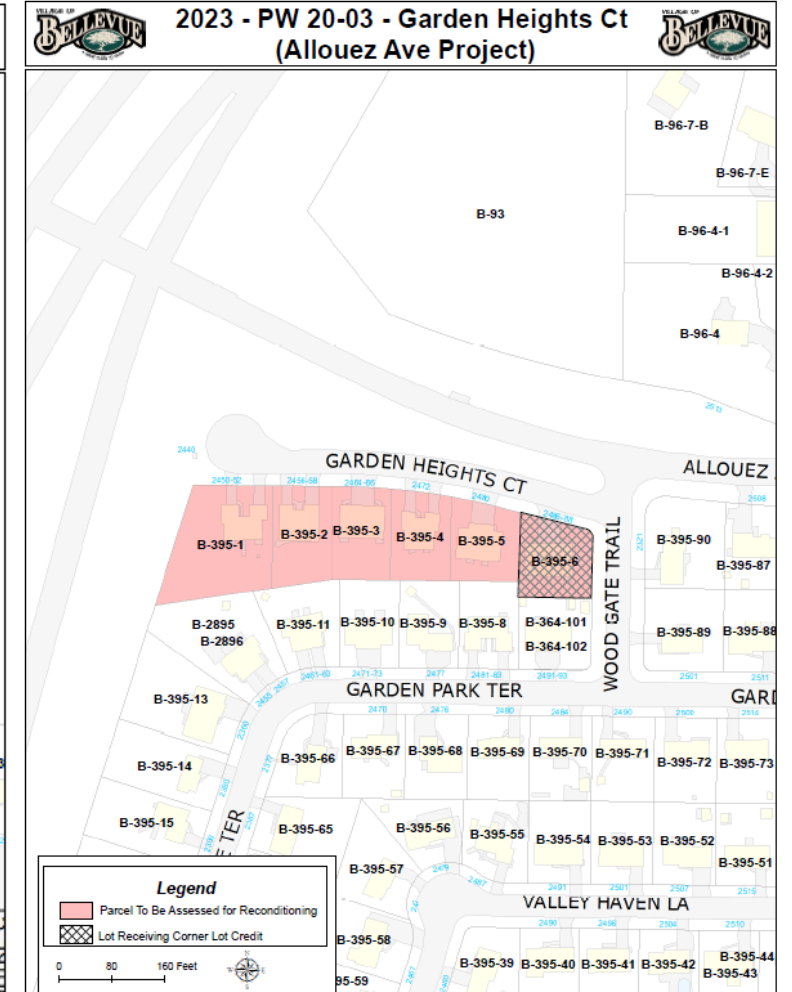
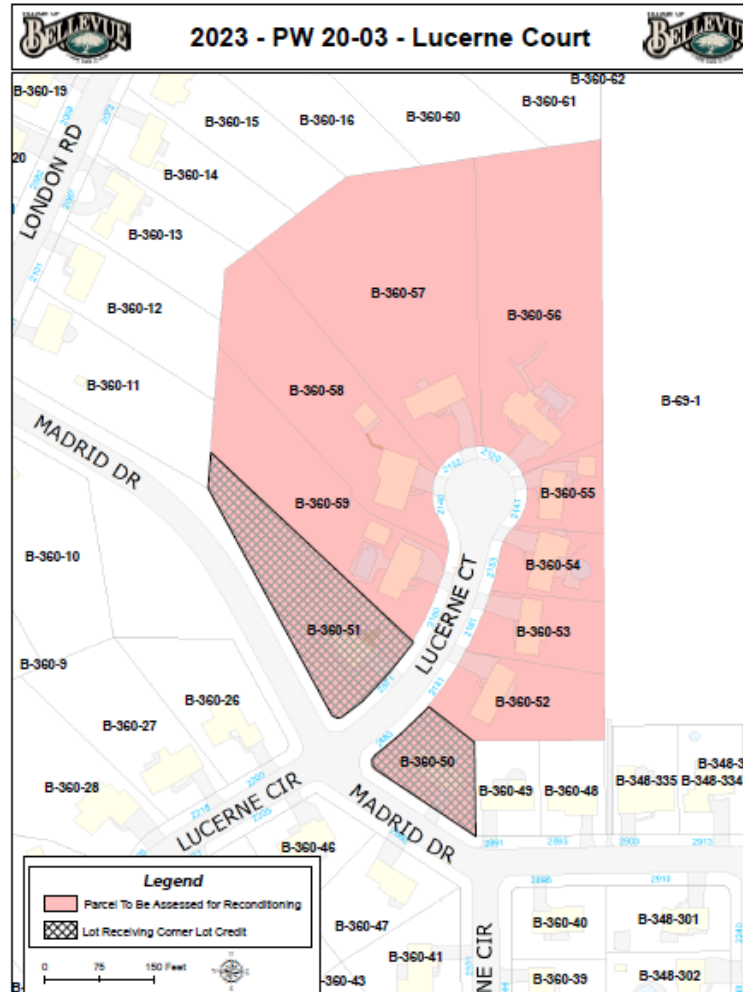
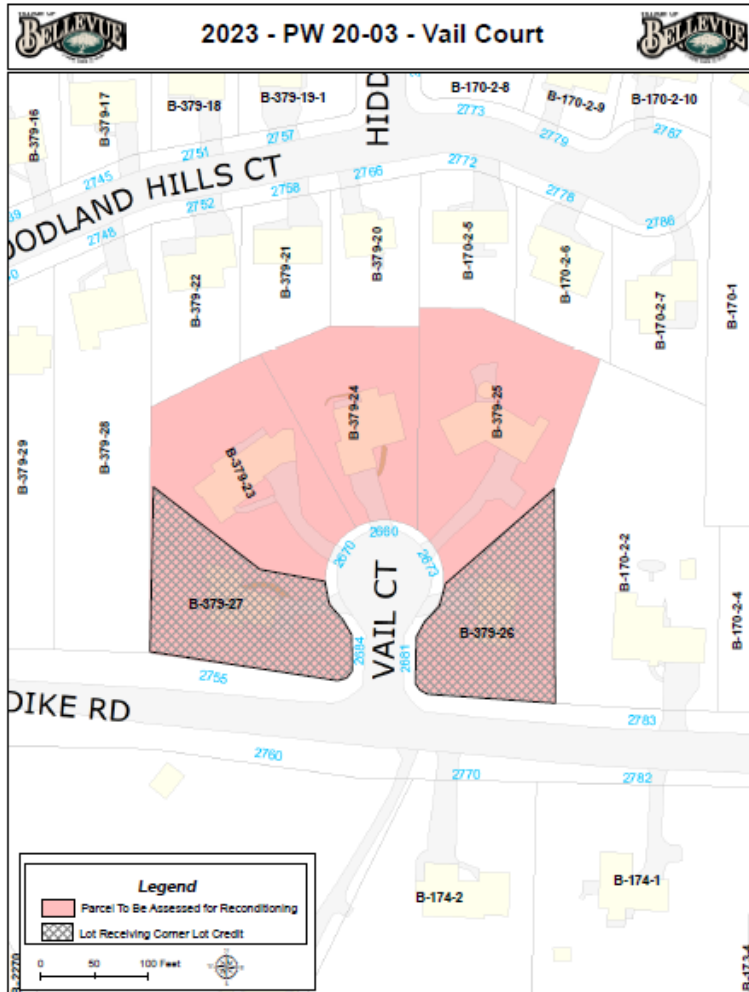


Storm Sewer – Repairs

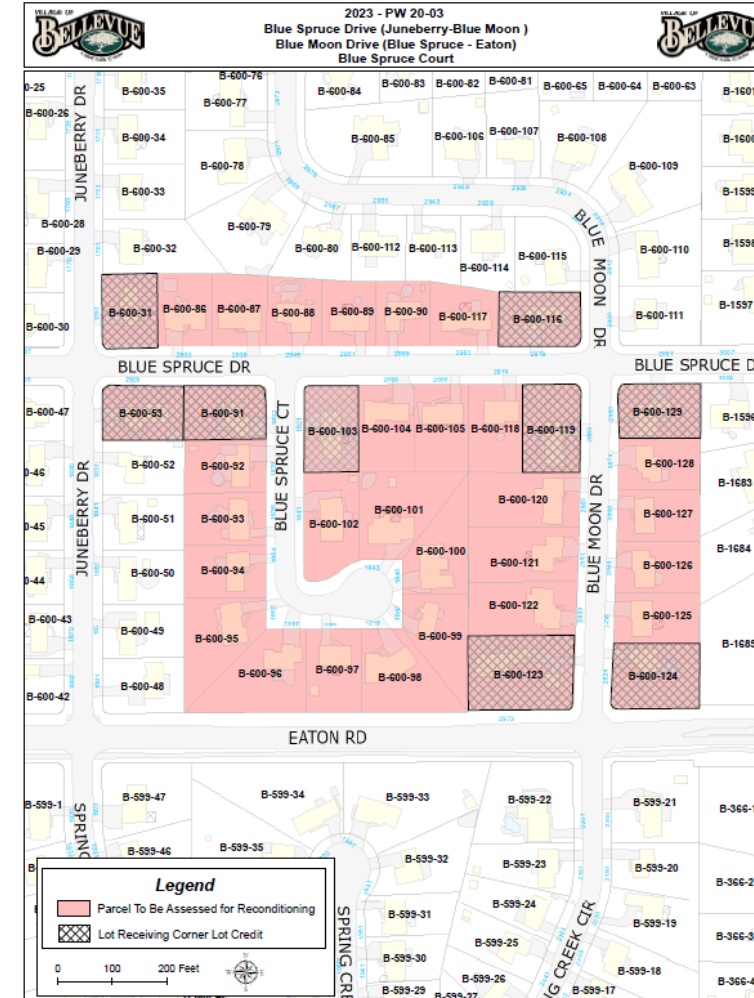
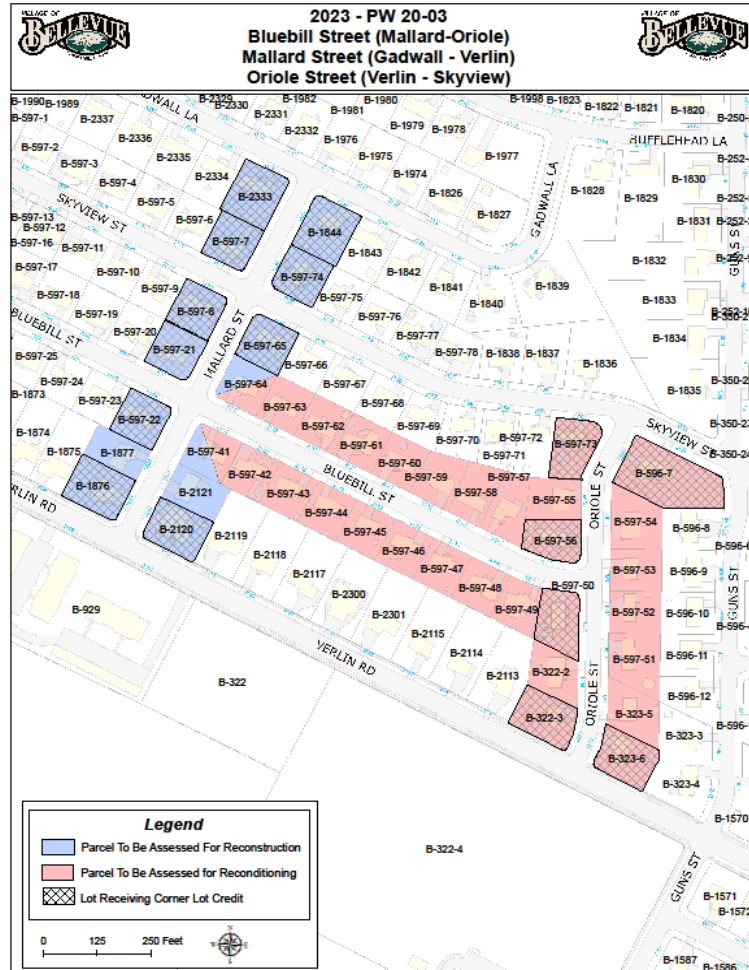
- All storm sewer manhole and catch basin structures were reviewed and the adjusting rings will be replaced.



Assessment Districts



Assessment Districts



Project Funding

- Village – Tax Levy, Storm Water Utility, Debt
 - Storm Sewer Adjustments
 - Road Construction
- Wheel Tax – utilized
 - Tax revenues to fund subsidies created by the assessment cap.
- Environmentally Sensitive Area (ESA) – none
- Village – Sewer/Water Utility
 - Sanitary Sewer Manhole – Adjustment

Project Assessments

- Assessments
 - *Ord 49-12 Cost Computation – Per Lot*
 - Properties within the Assessment District are reasonably homogenous with respect to size, street frontage, and use
 - Assessable project costs divided by the total assessable lots within assessment district
 - Corner Lot Credits
 - Maximum Rate (Cap) – Cost per Lot does exceed the Cap
 - Recondition - \$8,700
 - Terms – 10 year - 1% over the rate that the Village borrows the funds

Project Timeline

Task	Date
Board Budget Funding Approval	December 2022
Finish Design	December 2022 – February 2023
Bid Opening	February 15, 2023
Mail Out Assessment Information	February 6, 2023
Public Question/Answer Meeting on Project & Assessments	February 15, 2023
Special Assessment Public Hearing – 2nd Village Board Meeting	February 22, 2023
Construction • Areas will have set time to complete	April – August 2023 (Contractor to set)

Updates and Contact Information

How will we keep you informed?

- Village website – key info will be posted
 - www.villageofbellevue.gov (Construction Updates)
- Social Media
 - Facebook, Twitter, Blog, Email e-Newsletter
- Village office at 2828 Allouez Avenue
 - Teal Spellman, P.E., Director of Public Works
 - tspellman@villageofbellevuewi.gov
 - Office 920-593-5507

Q&A

- Questions?



- Thank You!

